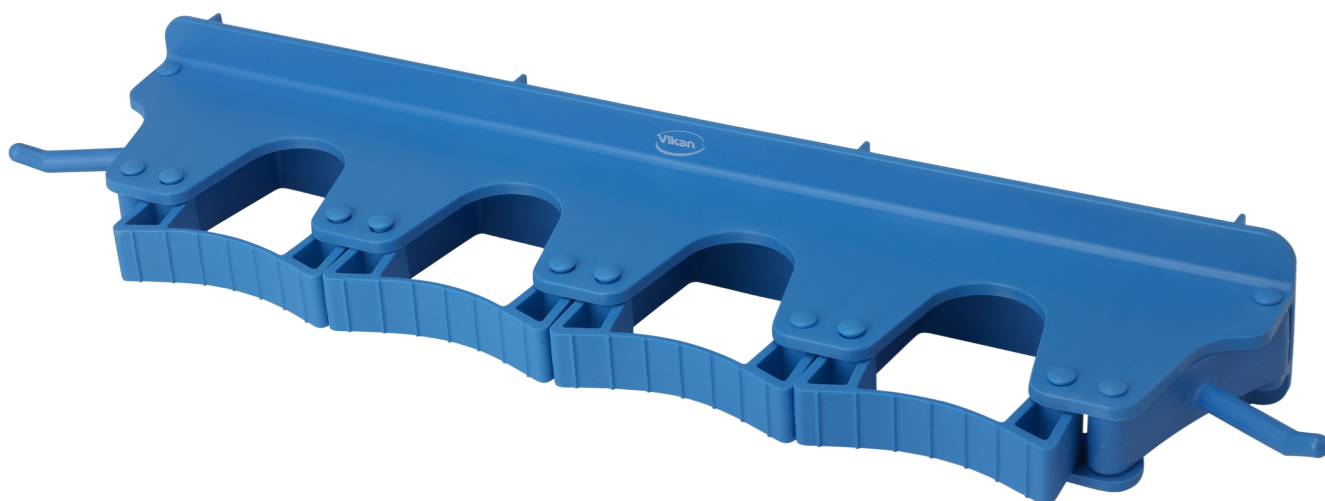


10183

## Wall Bracket 4-6 Products, 395 mm, Blue



Storage of cleaning equipment ensures good hygiene practice and extends shelf life of equipment. Fully colour coded. You can extend the bracket by adding one more next to the first bracket. You can mix rubber clips and hooks. Easy to clean, when you dismount the hooks and rubber clips - These parts can be sterilized in an autoclave.

The rubber clip can hold products with Ø25-35 mm.

# Technical Data

|   |                |
|---|----------------|
| Item Number   | 10183          |
| Holds products between  | 25 - 34 mm     |
| Material  | Polypropylene  |
| Suitable for Food Contact (EU 1935/2004), DoC <sup>1</sup>                      | No             |
| Produced according to EU Regulation 2023/2006/EC of Good Manufacturing Practice | Yes            |
| FDA compliant raw material (CFR 21)   | Yes            |
| Use of Phthalates (e.g. Bisphenol A)  | No             |
| Box Quantity  | 5 Pcs.         |
| Quantity per Pallet (80 x 120 x 200 cm)   | 510 Pcs        |
| Box Length  | 450 mm         |
| Box Width   | 260 mm         |
| Box Height  | 115 mm         |
| Length  | 395 mm         |
| Width   | 80 mm          |
| Height  | 60 mm          |
| Gross Weight  | 0,366 kg       |
| Net Weight  | 0,32 kg        |
| Cubik metre   | 0,00234 M3     |
| Recommended sterilisation temperature (Autoclave)                               | 121 °C         |
| Max. cleaning temperature (Dishwasher)  | 93 °C          |
| Max usage temperature (non food contact)  | 80 °C          |
| Min. usage temperature  | -10 °C         |
| Min. pH-value in usage concentration  | 2 pH           |
| Max. pH-value in Usage Concentration  | 10,5 pH        |
| Gtin-13 Number  | 5705020101830  |
| GTIN-14 Number (Box quantity)   | 15705020101837 |
| Commodity Code  | 39241000       |
| Country of origin   | Denmark        |

New equipment should be cleaned, disinfected, sterilised and any labels removed, as appropriate to its intended use, e.g. high risk vs. low risk food production areas, general hospital areas vs. intensive care units, before use.